

Technical Rider Lepeltje Lepeltje/ Spoon spoon

De Dansers

Version: 16 Feb 2019

Producer: De Dansers
Biltstraat 166
3572 BP Utrecht
Phone: +31 (0)30 7512558
Email: info@dedansers.com
Website: www.dedansers.com

Choreography: Josephine van Rheenen
Performers: Fleur Roks
Hans Vermunt
Yoko Ono Haveman
Youri Peters
Music (live): Hans Vermunt
Stage design: Josephine van Rheenen
Costumes and design consultation: Nicky Nina de Jong
Light design: Tim van 't Hof
Artistic coaching: Irene van Geest, Klaus Jürgens

Production: Danae Bos (danae@dedansers.com)
+31(0)6 13417052
Technical contact: Marco Chardon (marco.chardon@icloud.com)
+31(0)6 24611805

Please contact Production for more information on possible venues, open air performances and any other questions.

Times

Performance length: +/- 45 minutes, no interval (plus 15 min. for kids to play on stage after the performance)
Arrival Technicians (1): 4-5 hours prior (contact marco.chardon@icloud.com)
Arrival Performers (5): 2-3 hours prior (contact danae@dedansers.com)
Building: about 4-5 hours excluding breaks
Breaking: about 1 hour

Personnel

Technicians De Dansers: 1
Technicians Theatre building/breaking: 2
Technicians Theatre during performance: 1

Stage

Floor: Preferably a springy wooden floor, black dance vinyl optional.
We bring our own blue/grey dance vinyl (10m x 10m).
Horizon: No horizon

Masking: Preferably no masking / just a backdrop
Size (ideal): 12m deep x 14m wide x 5m high
Size (minimum): please contact production office (10m x 10m x 4 m high)

Scenery

31 mattresses
1 keyboard
some props

Special effects

NO fire, explosives, confetti, laser projection or strobe light
At the moment we perform a version with smoke, and a few hundred decorative autumn leaves will be dropped on the stage with a swirl fan.

Light

We would like to use the light set of the theatre (see Light Plan).
Technician brings his/her own light desk (Compulite Spark or Photon).

Sound

We would like to use 3 monitors, FOH and mixer from the House.
We will bring keyboard, guitar and loopstation and 3 wireless microphones with us. The music is staged at the upstage stage right side of the floor.

Patch Sound:

- 1 Wireless handheld mic on tripod (we will bring both ourselves)
- 2&3 Keyboard (stereo Jack or XLR Outputs)
- 4&5 Loopstation (Stereo RCA Outputs)
- 5 OH
- 6 Harmonica
- 7&8 Laptop (at the mixer)
- 9 Talkback

- Aux 1&Aux2 Stereo to Loopstation (Pre)
- Aux 3 Monitor Musician (Pre)
- Aux 4 Monitor Dancers Mono 2x downstage off stage L&R (Post)

Audience

If possible the venue/ theatre should have raked seating with a level stage. There is quite a lot of floor work in the front of the stage. (Good viewing lines are essential for the audience to fully enjoy the show.

Max. amount of visitors on location (gyms etc): 100 – 150 depending on the viewing lines.

Maximum amount of visitors in theatres with grandstand: 400.

Special cases, consult together.

Facilities

Dressing-rooms: One for 4 performers with warm showers.
Parking: One parking spot for van (6 meters, 2,60m high) at venue + 1 car

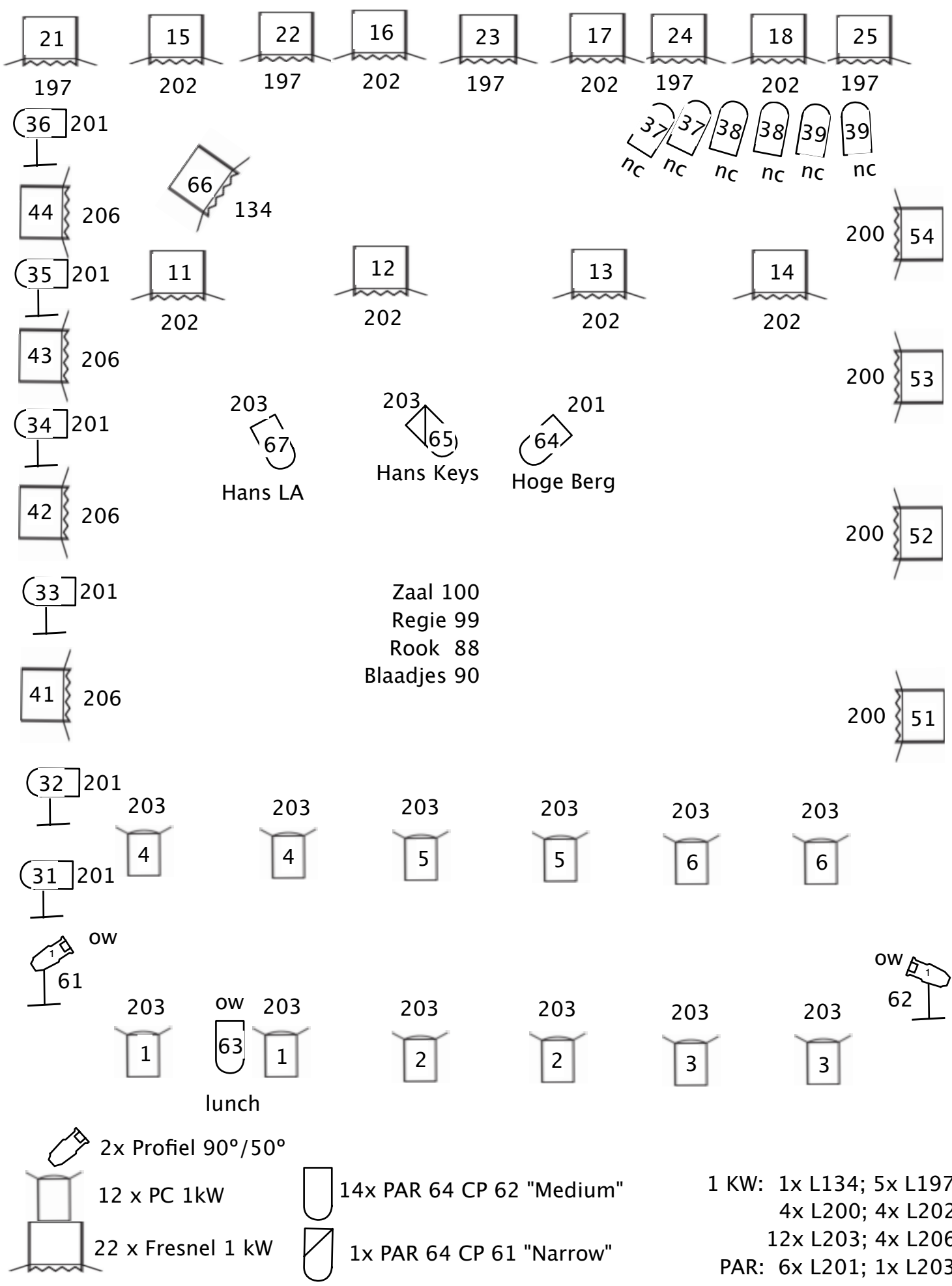
Special request:

Towels, fruit and water would be great in the dressing room.

Transport

Set plus technician: Mercedes Sprinter Van, length about 6 meters (2,60m high). Parking space is necessary.

Preferably also parking space for an extra car for the performers plus instruments.



Productie Risico Inventarisatie & Evaluatie/ Performance Risk Assessment
Lepeltje Lepeltje/ Spoon spoon, De Dansers

Choreography: Josephine van Rheenen | Stage design: Josephine van Rheenen, Nicky Nina de Jong |
Light design: Tim van 't Hof | Sound and music: Hans Vermunt | Production management: Danae Bos
| Technicians: Marco Chardon, Samia te Nuijl

STAGE DESIGN/ PROPS

mattresses

The mattresses are in close physical contact with the dancers, like costumes. Therefore they have not received additional fire-retardant treatment, to avoid physical irritation. Mattresses are soft to the touch and intensively trained with during rehearsals.

There are no sharp or dangerous objects on stage that could harm the dancers.

SPECIAL EFFECTS

No fire, explosives, loud noises, confetti, laser or strobe lights are used during the performance.

Leaves

During the performance around 500 decorative leaves will fall from a swirl fan. The leaves are fire-retardant and have a size of 7 cm each.

Smoke

During the performance we release a burst of smoke from a smoke machine at the back of the stage. This smoke is visible, but does not impair the vision of the audience or the dancers. The smoke is used for a short amount of time, and will drift upward before it envelopes the dancers.