

plan d- / andreas denk > - - - - -

www.plan-d.nl > - - - - -

## Technical Rider **The Friends' kitchen parade** // Theatre version

versie 19.03.20

Production manager: Wendy Grin [wendy@plan-d.nl](mailto:wendy@plan-d.nl) +31 6 46 87 91 90

Final direction: Mohamed Aadroun // Light: Varja Klosse // Choreography: Andreas Denk

Technic: Ohad Arama +31 6 55 38 80 95 [ohad.arama@gmail.com](mailto:ohad.arama@gmail.com)

*COVID 19 information.*

*The Friends' kitchen parade works according to the guidelines of the dutch institute of national health (RIVM) aswell the national government.*

*We keep 1.5. mtr distance to the public and pre-negotiate house codes of conduct with collaborating technicians and staff. We use the usual hygiene measures. We keep a close eye on new developments.*

### DESCRIPTION:

***The Friends' kitchen parade is a culinary and sustainable family dance performance for everyone who loves good food.***

Where are you allowed to slurp at table? What do forgotten vegetables taste like? Two dancers discover the ultimate in tasty recipes from all over the world. In a tasty journey through the cosmopolitan kitchen they find a wide range of dishes and traditions which tell us about the inhabitants and the country they grew up in. In this kitchen we celebrate world kitchen peace by eating together and by learning from each other's traditions and peculiarities.

Schema en personeel:

We come with 2 technicians.

We require 1 light-technician, 1 sound-technician.

A stage manager for the duration of the total load-in and build. (Bigger stages)

Depending on the agreement we also build our educational side program the 'Kitchen safari' (approx 2 hrs)

Technical building in consultation. About 6 hours, strike about 2 hours.

Duration time show: +- 60min.

During the show and break at least one technician stand by.

Note! After the performance we rest for about 15 minutes before we start the break. We have a lot of loose attributes to clean up after the performance. The dancers help but some technical assistance is appreciated. We will discuss this together before the performance.

## PLAYGROUND

Play surface of at least 8 meters deep and 9 meters wide. For a smaller surface or other specials, please contact the production manager of Plan d-

A preferably used black ballet floor that connects to the black masking on the sides and back.

Black stopper all around.

White horizon behind.

## DECOR and PUBLIC

We come with a mobile kitchen on air wheels, approx. 120 x 75 x 80 cm high. We have two light wooden panels of approx. 20 kg of 2x1 mtr. which are hung on the same pull as Horizon battery. (see also photo) The decor also consists of a number of microwaves on metal stands, two standing tables and a large "cookbook" 2x1 mtr. There are also a large number of pots, pans and kitchen utensils. The kitchen located center back. They really cook on two induction cooking elements. We need a fixed voltage for the trailer.

## LIGHT / SOUND:

Sound: We ask from the house:

A good FOH system.

2 stage monitors. (left and right at the back of the stage)

A sound table, with 1 stereo and 1 line inputs that can be independently routed to FOH

and monitors.

We have with us:

Audio source.

Mixer

Micro rak

Light: We ask from the house:

In the hood:

15 x Profile

12x PC

6 x Par mid

Horizon lighting in two colors

On the floor:

10 floor connections

6 x specials (we take with us)

4 x Profile (preferably 25-50 degrees)

We have with us:

Light computer ETCSpecial

small hazer

odor machine

popcorn machine

Direction:

We ask from the house:

a stable table in the room of at least 160 cm wide and 50 cm deep.

220 Voltage

Connection for FOH and DMX (line 1).

Effects:

Smoke from two small smoke machines.

A moment of flash paper about 5x3 cm ignition. (small flam)

Approx. 3 pull strings with a small bang effect.

AUDIENCE:

The audience is placed in consultation with the theaters. A "circus" arrangement is possible. We can provide 30 chairs and a number of picnic blankets. These can be used to

remotely place the audience in social groups and "bubbles" while respecting the associated distance. Ordinary frontal stand arrangement is of course also possible.

#### COOKING / EATING:

We cook live in the performance. For this we use three induction cooking elements that are placed in the fire-safe trailer.

Before or after the performance, we have dinner with the audience. We want to do this with a so-called speed date where the social bubbles sit opposite each other at a safe distance and enjoy pre-made snacks. This is part of the performance. Plan D- examines and discusses with the organization which form is most suitable and appropriate. (see further side program Kitchen Safari)

In the side program Kitchen Safari, the public is invited through Corona trial activities to get acquainted with each other's culture. The Kitchensafari is normally part of the performance. See Appendix!

#### ENVIRONMENT:

Children today are increasingly confronted with environmental issues. Plan D wants to bring children closer to nature and social issues.

Plan d- is actively committed to producing both business operations and performances in a climate-neutral manner.

We therefore ask the organization and all employees to think in advance about how we can spend this day as sustainably as possible. For example, by coming to the location by bicycle or public transport and encouraging the public to do the same. In order not to bring meat in the picnic basket or lunch and to use as little plastic as possible, etc.

#### Other:

Dressing room (s) with enough space and showers for 2 dancers.

The technical data sheet is part of the contract concluded between the organizer and Stichting plan d-. If you have any questions, please contact the production manager or Andreas Denk.

We look forward to a performance at your location!

With best regards,  
The team plan d-  
Plan-d foundation  
1032 XR Amsterdam  
The Netherlands

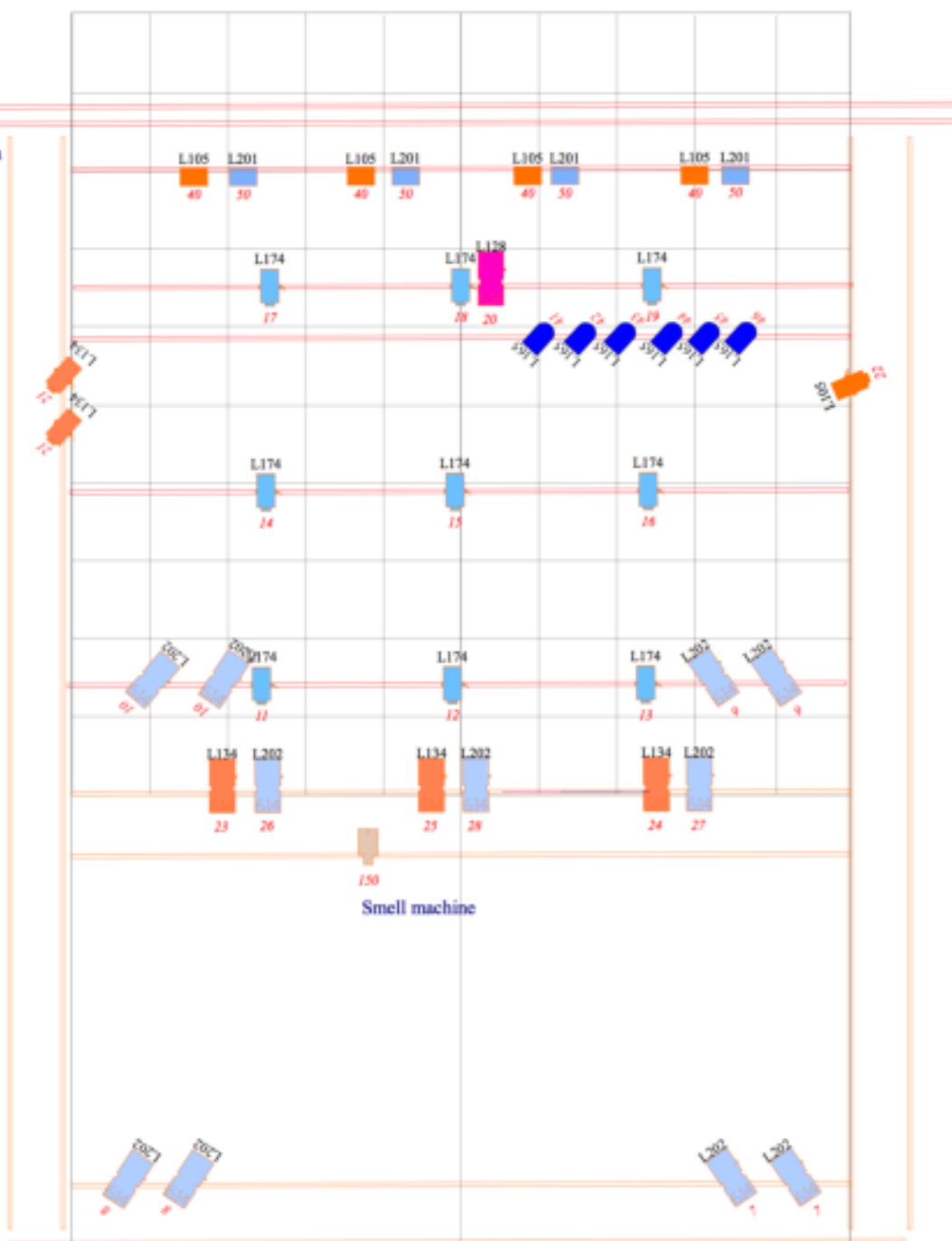
info@plan-d.nl  
+31 644762025



Horizon

Fond

Horizon licht + panelen



## Buurmans keukenparade

Lighting Design: Varja Klose

Assistant:

Director: Plan D

Scenic Design:

Venue: CC Amstel

Zero Date:

Printed: Sep/24/20

Printed By: rozenkleker

File: buurmanskeuken LP 1.0

### Legend

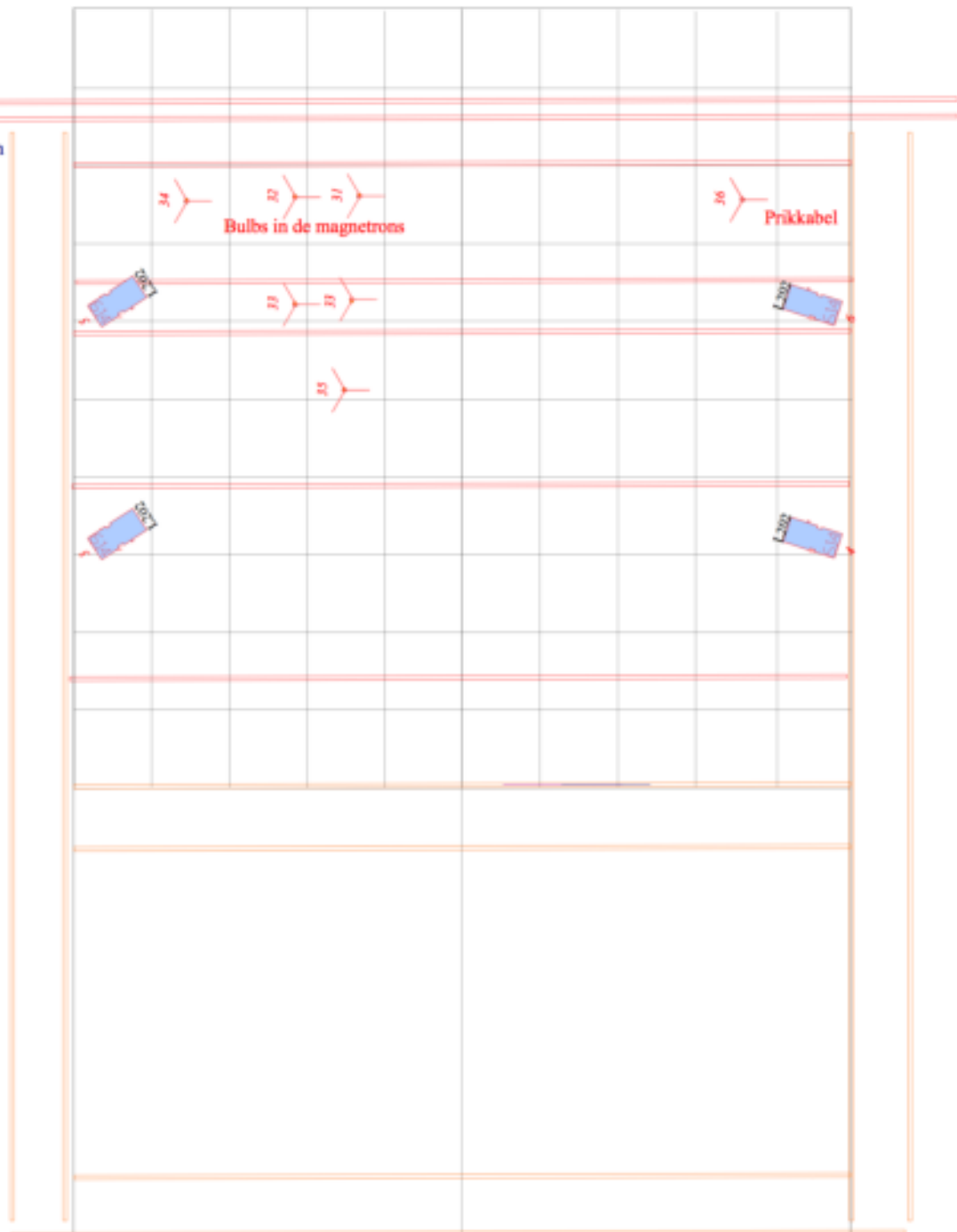
Symbol	Name	Count
	Profile 25-50 graden	15
	PAR 64 CP/62	6
	Horizon 1 KW	8
	PC 1 KW	12
	Smell machine	1

Zaal licht oh 100

Horizon

Fond

Horizon licht + panelen



### Buurmans keukenparade

Lighting Design: Varja Klose

Assistant:

Director: Plan D

Scenic Design:

Venue: CC Amstel

Zero Date:

Printed: Sep/24/20

Printed By: rozenkreicer

File: buurmanskeuken LP 1.0

### Legend

Symbol	Name	Count
	Bulb Socket	7
	614SX	4

Zaal licht ch 100

Ch	Focus
3,4	Tweede plan zij licht laag. Een beetje schuin/frontaal. Dekt tweede plan (voor de keuken)
5,6	Derde plan zij licht laag. Een beetje schuin/frontaal op de keuken. Niet op de horizon.
7, 8	Eerste plan front licht. Gekruist vanuit het midden tot de keuken. Rond, onscherp
9,10	Tweede plan front. Gekruist vanuit het midden. Begint voor de keuken. Op de spelers in de keuken, ook aan de zij kanten. Max 50 sm in de hoogte op het horizon.
11-19	Top licht. Drie plannen. Ca 4 meter in diameter. Samen vormen een totaal. Rond, zonder kleppen. Recht naar beneden.
20	Top licht op het karretje met de pannen. Afgesneden binnen de wagen.
21	Een spot toplicht achter het boek. Tweede als verlenging hiervan diagonaal de keuken van Andreas in. Tot het midden van de keuken. Niet op het horizon.
22	Zij licht. Groot. Heel toneel.
23+2 6	Paneel L. Vrijwel scherp op het paneel. Ch 23 L 134,ch 26 L 202
25+2 8	Paneel Midden.
24+2 7	Paneel R
31-35	magnetrons
36	prikkabel
41-46	Tegen licht waaier op de keuken en 2 de speelplan.
40,50	Horizon licht L105 en L201
100	Zaal licht
150	Smell machine