

Bruce/Marie

by DUDA PAIVA COMPANY

Technical Rider

Contact: tech@dudapaiva.com
Performer: 1, Duda Paiva
Technicians of DPC: 2
House technicians: minimum 2

Duration of performance: approx. 65 mins.
Dimensions of Stage: 10 mtr. x 8 mtr. (W x D)
Height of grid: 6 mtr. (minimum)

Balletfloor / Vinyl: Yes, black.
Dressing room: 1
Wings / Curtains: Yes, black. With wings around the floor.

Smoke / Haze: Yes
Set Time: Approx. 6 hrs.
Strike: Approx. 2 hrs.
House Technicians: 1 light / 1 audio

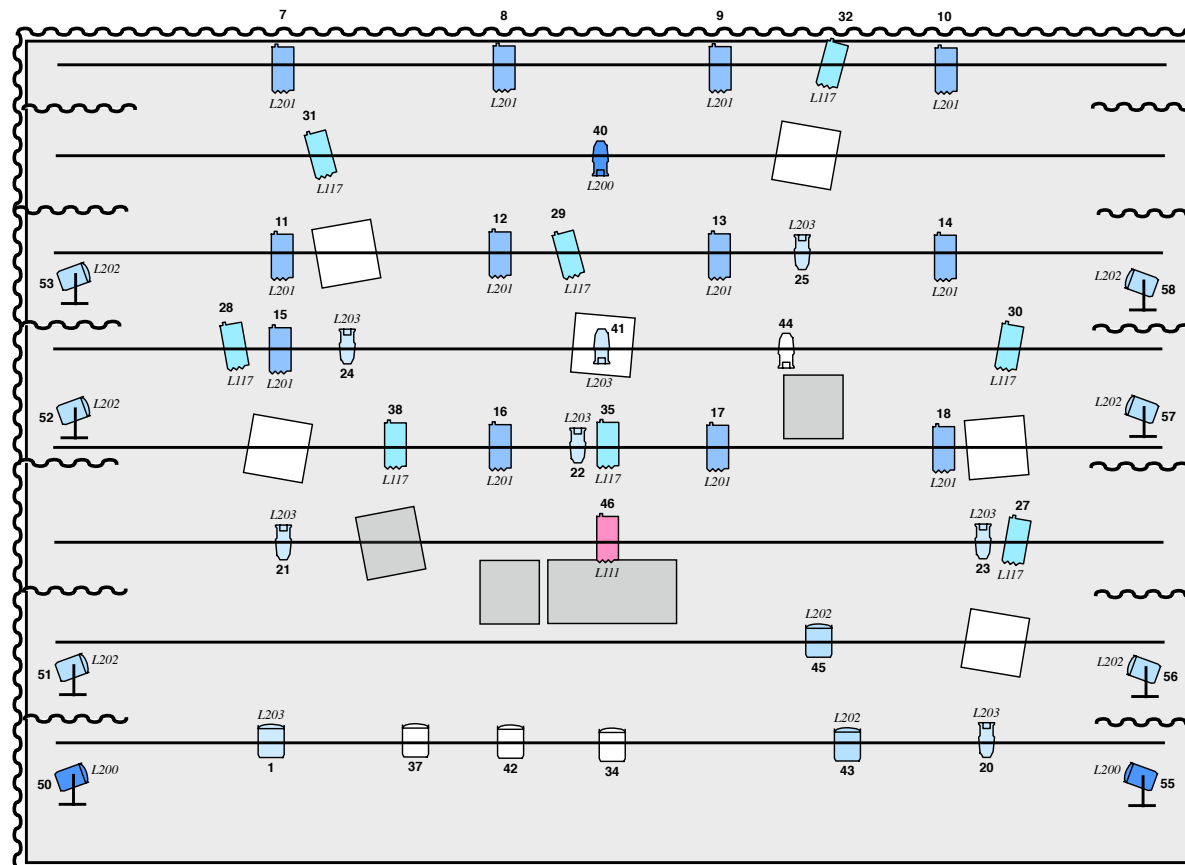
Set: The set contains 6 hanging cubes (lightweight). We bring our own adjustable steels.

Risks: There are no hazards for either performer or audience. Smoke detection should be switched off for Haze/ Fog.

Lighting:

- 8 floor connections/ channels (dimmable)
- 48 channels in total.
- We use a follow-spot. We place it by the regie. Can we hang a decoupe here? Or you have a stativ? Or do we need to bring our own?
- We bring our own lighting desk.
- We bring our own colour gels.
- We do not use any moving lights/ DMX controlled lights.

- Audio:
- PA with separate sub
 - 2 monitors on stage
 - We place our wireless mic on stage, we will require a return connection from stage to mixer.
 - We bring our own mixer. (Behringer X32)
- Haze / Fog:
- We bring our own hazer.
 - Smoke detection should be switched off in accordance.
- Additional:
- Please see the lighting plan. Do you have enough lights? If not please let us know, we can bring our own.
 - For the follow spot, do you have the material to place it by the regie-area?
 - Our wireless microphone uses the 470 - 558 MHz. range. Are they available in your area? If not, can we use a wireless mic of the venue?
We have our own headset (DPA dfine 88), mini xlr and mini jack is possible.



3

62

FOLLOWSPOT FROM LIGHTCABIN

LIGHTPLAN "BRUCE MARIE" BY DUDA PAIVA COMPANY 2021



PC



FRESNELL



PROFILESPOT



PC WITH BARNDOR ON FLOORSTATIVE



FOLLOWSPOT. PREFERABLY PROFILSPOT WITH IRIS

INFO & QUESTIONS PLEASE CONTACT TECHNIEK@DUDAPAIVA.COM